

V. Diptera

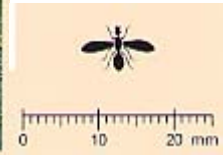
flies, maggots



62. *Delia platura*
seedcorn maggot
(larvae)
North America



63. *Rivellia quadrifasciata*
soybean nodule fly (adult)
North America



Vi. Predators



64. *Polistes* wasp preying on caterpillar
Japan



65. Pentatomid predator with unknown prey
Brazil



66. *Podisus maculiventris* preying on caterpillar
USA



67. *Amyotea malabarica*
(nymph) preying on looper
India



68. *Nabis* sp. preying on caterpillar
USA



69. *Callida decora* (adult) preying
on caterpillar
Brazil



70. *Calosoma* sp. (larvae)
preying on velvetbean caterpillar
Brazil



71. *Coleomegilla maculata*
ladybeetle (adult)
North, Central and South
America



72. *Coleomegilla maculata*
ladybeetle (adult)
North, Central and South
America



73. Mantid
USA



74. *Argiope* sp. spider preying on caterpillar
USA



75. Syrphid maggot preying
on *Spodoptera*
Brazil



76. *Chrysopa* larva
preying on soybean aphids
China

VII. Parasites



77. *Microplitis demolitor*
parasitizing corn earworm
Brazil



78. *Trissolcus* sp. parasitizing
eggs of *Nezara viridula*
Thailand

VIII. Insect Diseases



79. *Plathypena scabra* infected with
Nomuraea rileyi
USA



80. *Heliothis zea* infected with
Nuclear polyhedrosis virus
USA



81. *Pseudoplusia includens* infected with
Entomophthora gammae (resting spores)
USA

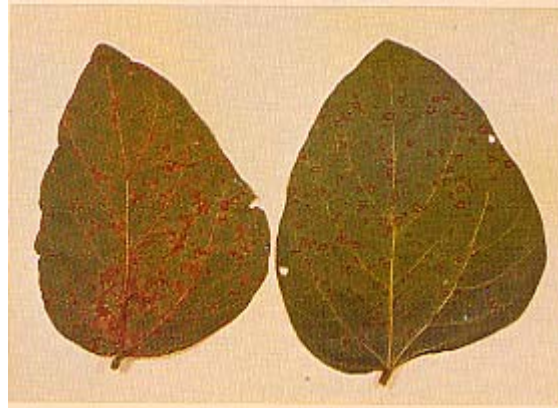


82. *Anticarsia gemmatilis* infected with
Entomophthora sp.
USA

PLANT DISEASES



83. Bacterial blight



84. Cercospora leafspot (left), frogeyes leafspot (right)



85. Phomopsis stem canker (left),
pod and stem blight (right)



86. Pyrenochaeta red leaf blotch



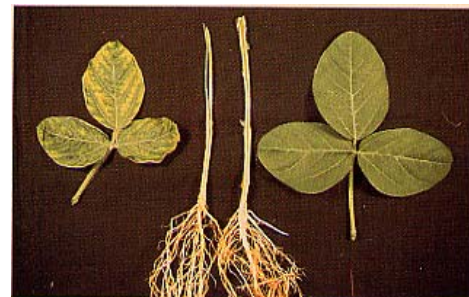
87. Soybean rust showing RB reaction (left),
TAN reaction (right)



88. Rhizoctonia root and stem decay



89. Anthracnose on stem



90. Brown stem rot showing interveinal chlorosis and stem
browning (left), noninfected leaf and stem (right)



91. Disease symptoms on seeds: from soybean mosaic virus infected plants (upper left and right); phomopsis seed decay (lower left); purple seed stain (lower middle); noninfected seeds (upper center)



92. Soybean mosaic



93. Bud blight (tobacco ringspot virus)



94. Yellow mosaic virus



95. Soil pedes with cyst nematode cysts



96. Galls of *Melanopsisichium pennsylvanicum*



96. *Sclerotinia sclerotiorum* sclerotia



98. Bacterial blight on seed