

## V. Diptera

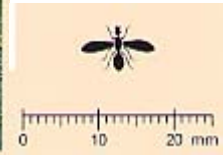
*flies, maggots*



62. *Delia platura*  
seedcorn maggot  
(larvae)  
North America



63. *Rivellia quadrifasciata*  
soybean nodule fly (adult)  
North America



## Vi. Predators



64. *Polistes* wasp preying on caterpillar  
Japan



65. Pentatomid predator with unknown prey  
Brazil



66. *Podisus maculiventris* preying on caterpillar  
USA



67. *Amyotea malabarica*  
(nymph) preying on looper  
India



68. *Nabis* sp. preying on caterpillar  
USA



69. *Callida decora* (adult) preying  
on caterpillar  
Brazil



70. *Calosoma* sp. (larvae)  
preying on velvetbean caterpillar  
Brazil



71. *Coleomegilla maculata*  
ladybeetle (adult)  
North, Central and South  
America



72. *Coleomegilla maculata*  
ladybeetle (adult)  
North, Central and South  
America



73. Mantid  
USA



74. *Argiope* sp. spider preying on caterpillar  
USA



75. Syrphid maggot preying  
on *Spodoptera*  
Brazil



76. *Chrysopa* larva  
preying on soybean aphids  
China

## VII. Parasites



77. *Microplitis demolitor*  
parasitizing corn earworm  
Brazil



78. *Trissolcus* sp. parasitizing  
eggs of *Nezara viridula*  
Thailand

## VIII. Insect Diseases



79. *Plathypena scabra* infected with  
*Nomuraea rileyi*  
USA



80. *Heliothis zea* infected with  
Nuclear polyhedrosis virus  
USA



81. *Pseudoplusia includens* infected with  
*Entomophthora gammae* (resting spores)  
USA

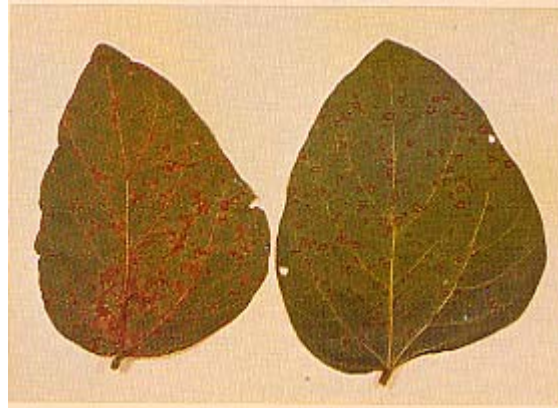


82. *Anticarsia gemmatilis* infected with  
*Entomophthora* sp.  
USA

# PLANT DISEASES



83. Bacterial blight



84. Cercospora leafspot (left), frogeyes leafspot (right)



85. Phomopsis stem canker (left),  
pod and stem blight (right)



86. Pyrenochaeta red leaf blotch



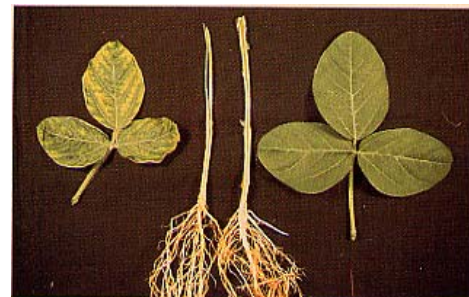
87. Soybean rust showing RB reaction (left),  
TAN reaction (right)



88. Rhizoctonia root and stem decay



89. Anthracnose on stem



90. Brown stem rot showing interveinal chlorosis and stem  
browning (left), noninfected leaf and stem (right)



91. Disease symptoms on seeds: from soybean mosaic virus infected plants (upper left and right); phomopsis seed decay (lower left); purple seed stain (lower middle); noninfected seeds (upper center)



92. Soybean mosaic



93. Bud blight (tobacco ringspot virus)



94. Yellow mosaic virus



95. Soil pedes with cyst nematode cysts



96. Galls of *Melanopsichium pennsylvanicum*



96. *Sclerotinia sclerotiorum* sclerotia



98. Bacterial blight on seed